



Emergency Tooth Knocked Out



Happy Dentists

First: Find
the tooth



Hold the Crown
of the tooth

Do not touch, the
root (the yellow part).

If the tooth is dirty,
rinse it with milk
or saline

Do not use water, or
scrape/scrub the tooth

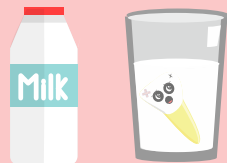


If **unable** to replant, tooth
broken into **pieces**, or
unsure if tooth is an
adult or **baby** tooth

If **able** to replant,
Patient is **conscious**,
& operator is **certain**
it is an **adult** tooth

Submerge the
tooth in dairy milk.

Saliva, saline or plastic
wrap can be used
but time for cell
survival is shorter.



Or

Replant into the
socket with light
Pressure.

Hold the cleaned
tooth by the crown.
Never replant a baby
tooth



See the dentist

as soon as possible

Timing is very important in these situations,
the sooner the patient is seen the better

